

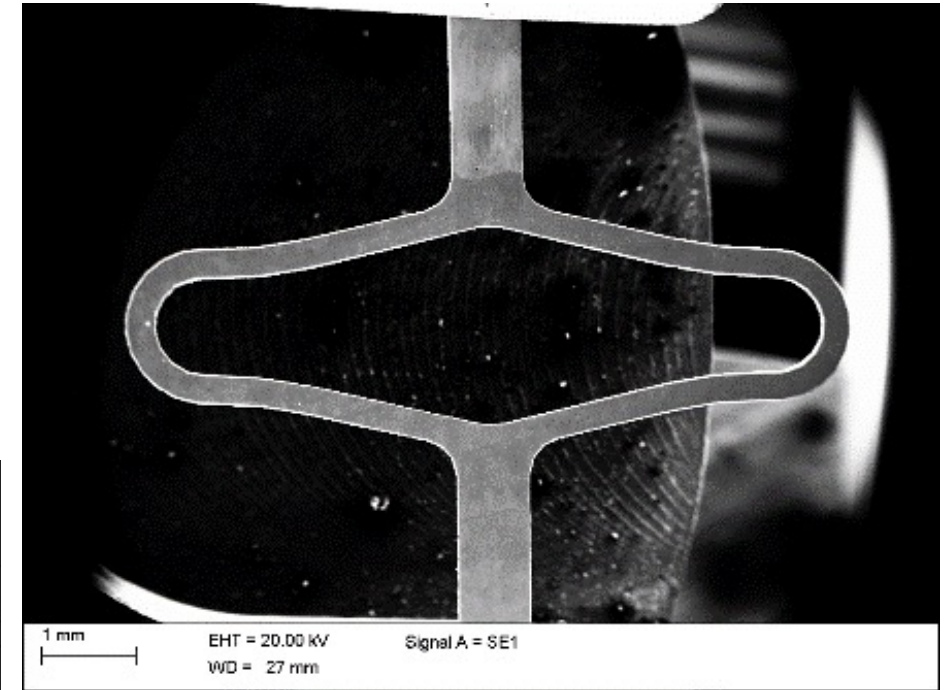
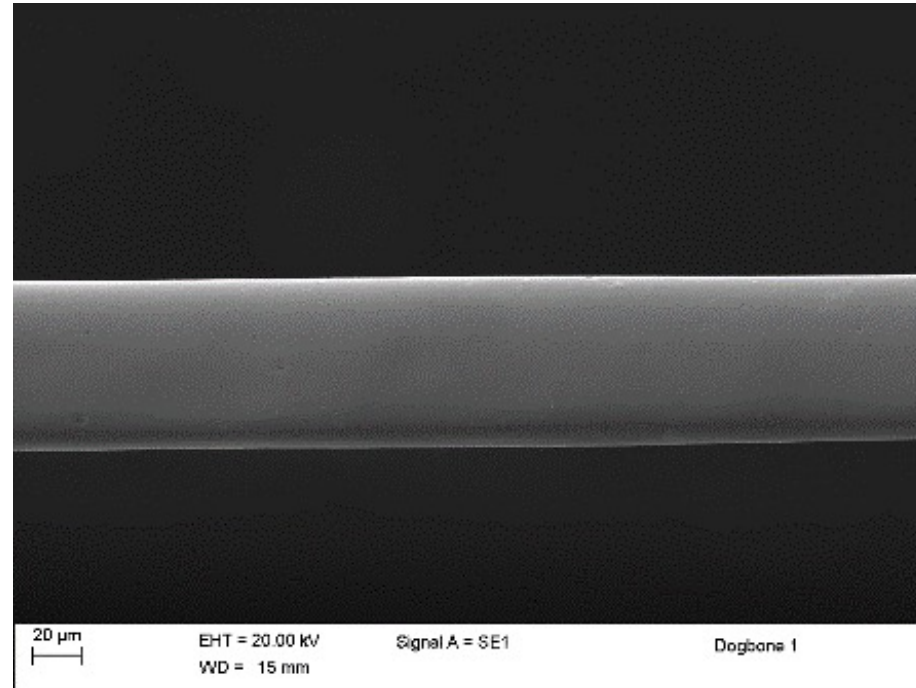
Characterisation of 2D superelastic NiTi geometries

Supervisors:

L. Patriarca

C. Biffi (CNR – Lecco)

- Investigate the superelasticity in 2D geometries of NiTi
- Development of a frame to load the small devices and track the local deformations
- The activity will be carried out in PoliMi and CNR-Lecco labs



Diamond like element

Dogbone after electropolishing